



Printer instructions

Tractor、printing platform、the base of printhead, Integral metal plate;

dismantle the rubber band that fix the base of printhead、 blue packaging tape



2.Plug usb cable, connect computer; advise using desktop computer, USB cable plug port of the reverse side。 Plug power line, Turn on switching power supply (indicator light will be steady light) 。



[REDACTED]

[REDACTED]

[REDACTED]

[REDACTED]

[REDACTED]

[REDACTED]

[REDACTED] [Not recommended](#)

[REDACTED]

[REDACTED]

[REDACTED]

[REDACTED]



[REDACTED]

[REDACTED]

[REDACTED]

[REDACTED]

[REDACTED]

[REDACTED]



[REDACTED]

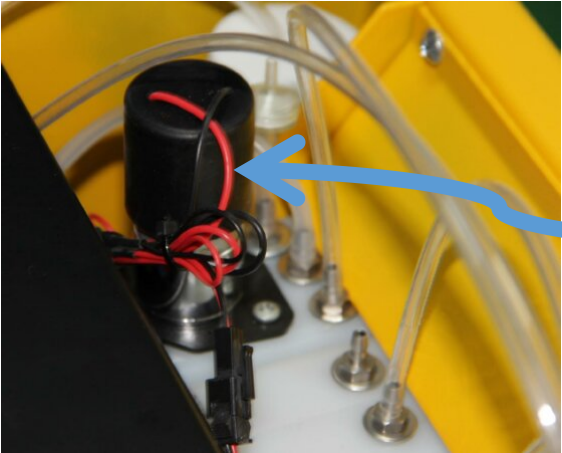
[REDACTED]

[REDACTED]

[REDACTED]

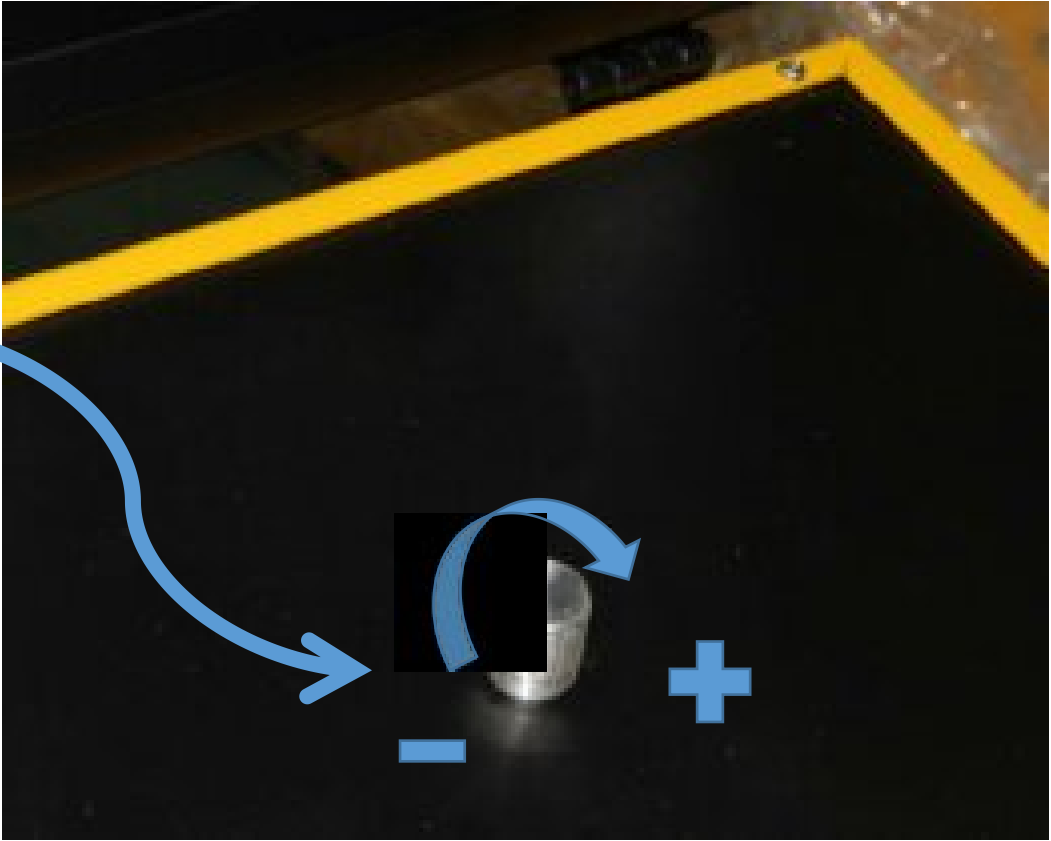
[REDACTED]

[REDACTED]



[REDACTED]

[REDACTED]



4. Install the printer driver,printer only support **windows system**!

Check the number of bittings on your computer's system : Move the mouse over the desktop "This PC" icon/right-click/properties



Turn off all anti-virus software on your computer

Open the U disk Driver folder in the files, and select the driver according to the model and computer system 's number of bittings to install



If the file is corrupted, you can download the driver yourself .

L805 model:

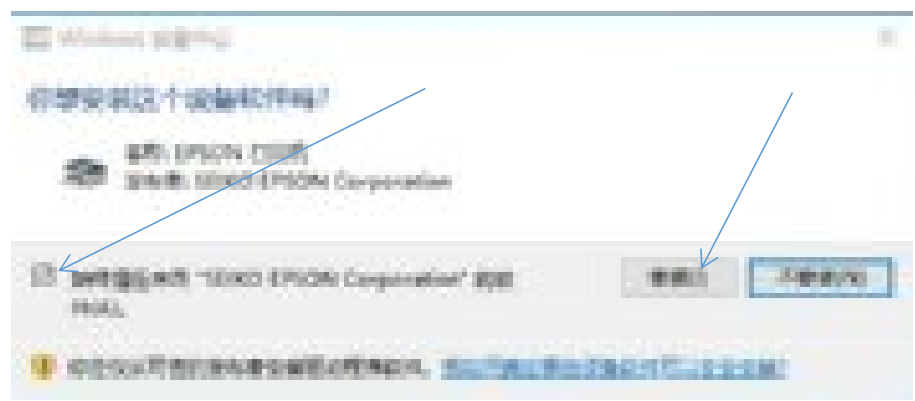
64 bittings driver download website :

<https://dl.drivers-epson.com/epson/11/Epson-L805/Epson-L805-printer-driver-Windows-64-bit.exe>

32 bittings driver download website :

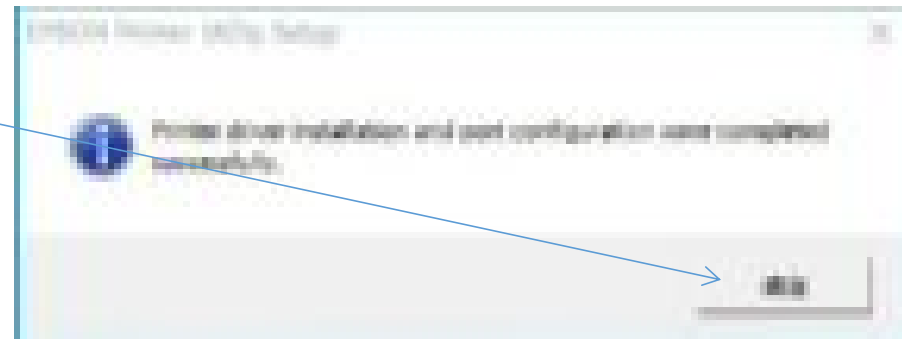
<https://dl.drivers-epson.com/epson/11/Epson-L805/Epson-L805-printer-driver-Windows-32-bit.exe>

5. Double-click the corresponding installation package to start installing the driver





This step is done automatically when the printer is powered on !



6. Add ink

Add the ink bottle with color ink and white ink according to the ink bottle logo

(Attention: Before adding ink, shake the ink evenly before pouring in , especially white ink) ;



7. After the driver installation is complete, a printer icon appears in the taskbar in the lower-right corner of the computer desktop ,



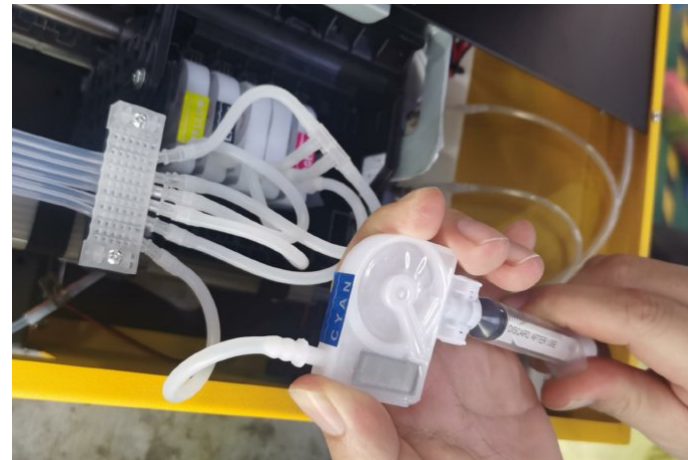
When using the printer for the first time, because the ink tube, ink capsule and print head are empty and inkless, it is necessary to take out ink many times.

① Steps: Right-click the printer icon → nozzle cleaning → begin. (You can also long press the ink button on the printer for 5 seconds, quick operation)



This step repeat a couple of time, Until all channel ink fills the tube and enters the printhead .

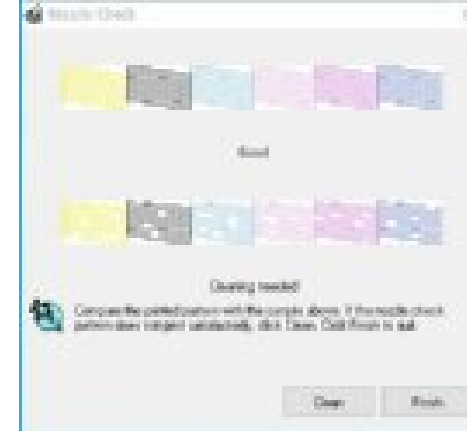
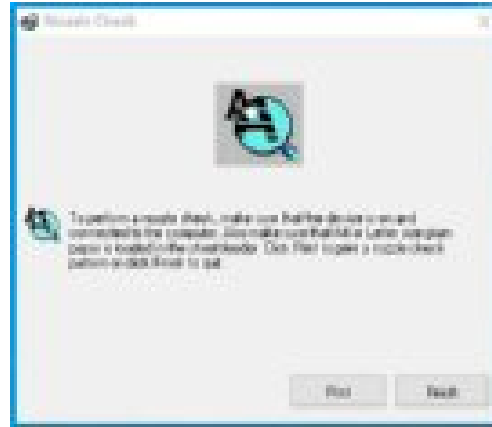
(if take out ink many times, still don't have ink into ink capsule, you could use injection plug into ink capsule, take out ink directly; Check that the cleaning unit blotting pads are not misaligned 、 Whether the ink tube has come off , Whether the ink supply pipe is flattened, bent or broken.)



8. Print nozzle check pattern

Steps: Right-click the printer icon → nozzle check → print .

Check the printed pattern, if there is no broken line and lack of color, it can be completed, otherwise you need to repeat the above 7.(1) steps .



The middle two colors are white ink, and you need to print with PET film to see the nozzle situation. You can't see it when printed on white paper, you usually mistakenly think that there is no ink.

In using process, print nozzle to check pattern, If there is a slight disconnection, it is still normal loss, Doesn't affect printing effect.

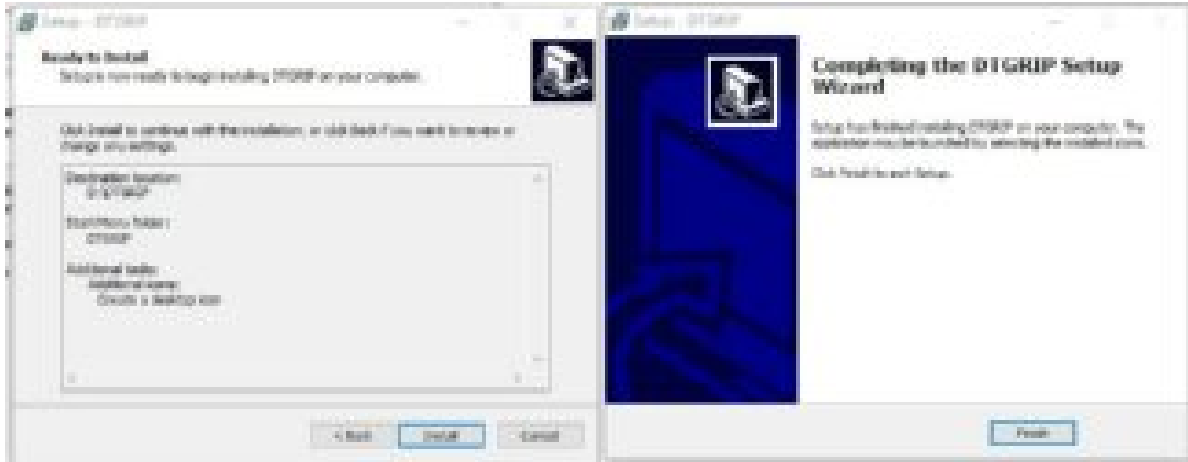
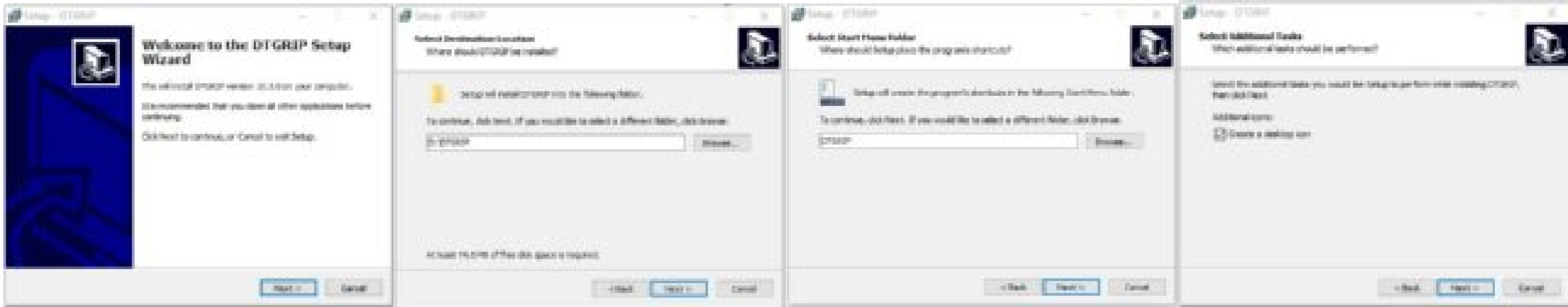
(When the nozzle inspection is seriously broken, multiple cleaning still does not solve, you can try to use a syringe to directly draw ink from the waste ink tube)



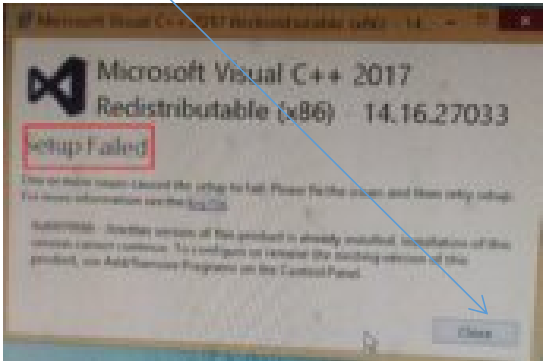
9. Install DTG RIP 10.3 printing software

Turn-off all anti-virus software, plug u disk into computer, unzip DTGRIP_Setup_v10.3.zip, double-click DTGRIP_Setup_v10.3.exe start to install.

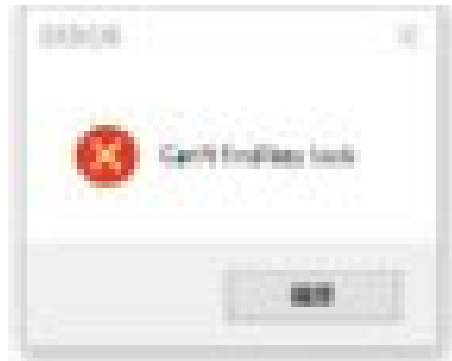
Attention: the installation path shouldn't be too complicated, Otherwise, an error will be reported when using the software , just follow default path to install D:\DTGRIP.



just ignore it, close it



9.1 Turn-on software if appear "can't find key lock".this, means that you didn't plug into software, or computer USB port doesn't touch good,you need to change another port to plug into.



9.2 Turn on software,if appear "The code execution cannot proceed because eDtgrip.dll..." means the software be deleted mistakenly by anti-virus software ; In the lower right corner, Windows Security Center → Virus and Threat Protection → History Protection Record, restore this file, and the file will not be killed again.



10.DTG RIP 10.3 using of printing software

Plug softdog into computer



Double-click the desktop icon, The interface is shown below :



[illegible]

- All Files (*.*)
- all Files (*.*)
- Encapsulated Postscript (*.eps)
- Postscript (*.ps)
- Portable document format (*.pdf)
- Windows Bitmap (*.bmp)
- tagged image file format (*.tif)
- MSO File (*.mso)
- Portable Network Graphics (*.png)
- Photoware Data File (*.pdt)

It is recommended to use the PNG format, if you want to openwork printing, you need to use PS to remove the background。

Attention: name of imported file shouldn't be too long (Up to 10 characters) , Don't have special characters. Otherwise errors will be reported when printing.

Layout

Paper Size

Width	82.000
Height	86.000

Output Position

X	0.500
Y	0.500

Output Size

Width	17.000
Height	18.000

Scale

Equal Proportion	True
------------------	------

Repeat

X	1
Y	1

Dist/Space

X Spacing	0.500
Y Spacing	0.500
Pattern	Normal

Distribution

10.000

Paper size setting, width value does not need to be modified; The height is set to the pattern height +1cm

Photo printing positionThe location where the picture printing starts

X is the margin distance and Y is the header distance

The Y value cannot exceed 3cm, otherwise there will be a lack of paper and an error

Image size

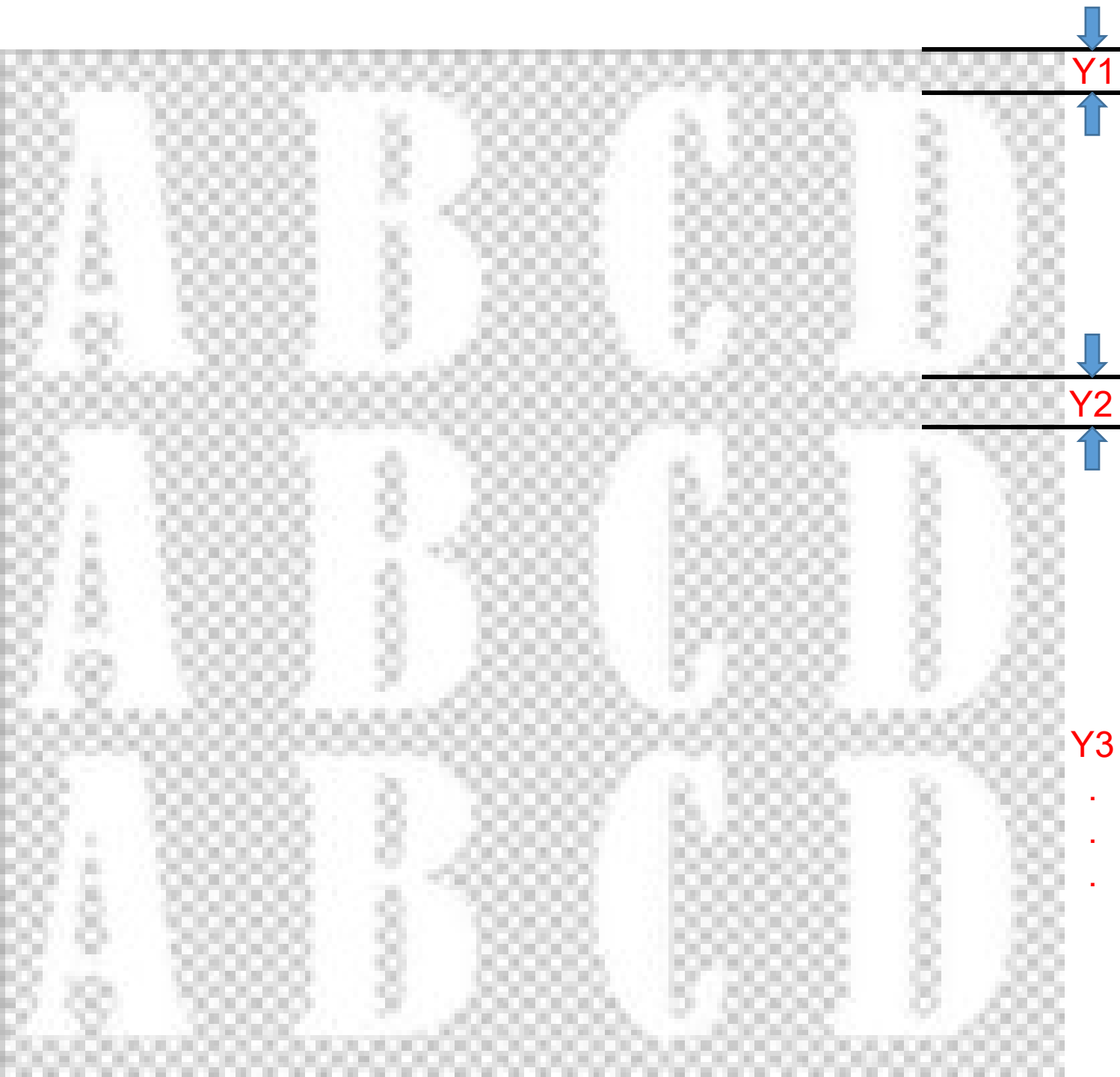
Picture Yes/No Scaled proportionally adjust

Number of picture arrays X is the horizontal number and Y is the vertical number

Picture array spacing

X is the horizontal space and Y is the vertical space

The Y value cannot exceed 3cm, otherwise there will be a lack of paper and an error



Pattern typesetting

Y1、 Y2、 The size cannot exceed 3cm, otherwise there will be a lack of paper and an error!

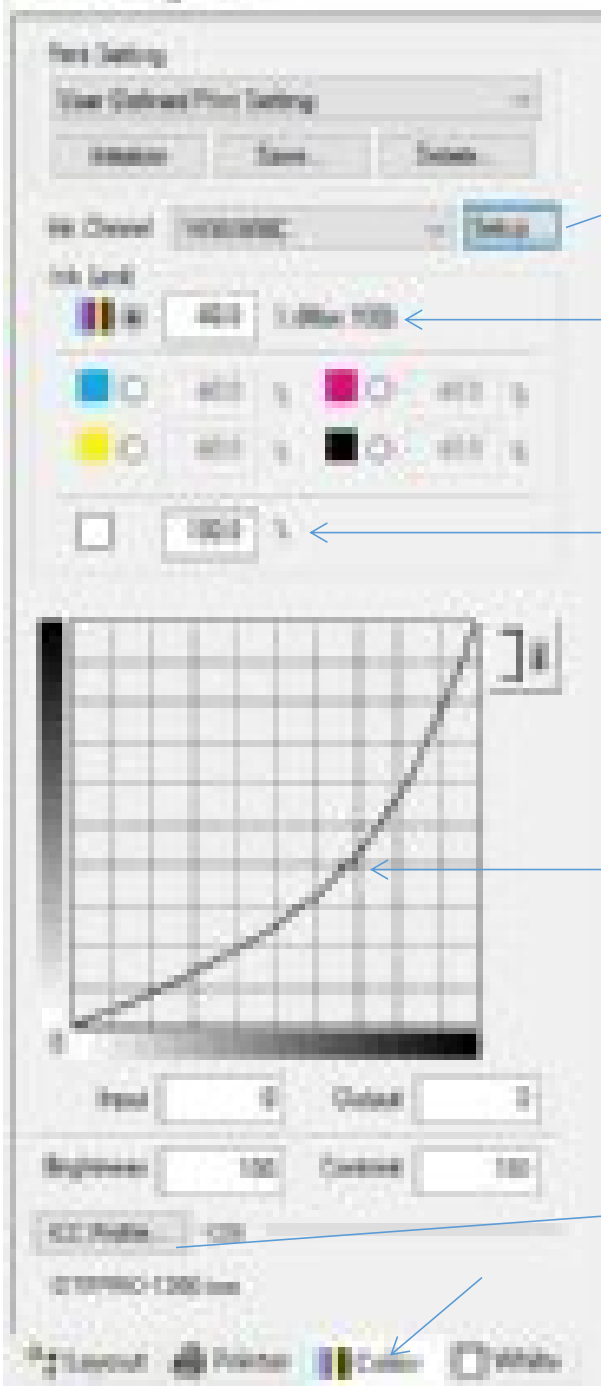


← Select printer model according to your printer。

← Select printer port

← Resolution : Choose white and color resolutions according to your needs (1440*720 or 1440*1440 recommended)

← Select the print mode according to the actual situation!
(There is no roll controller for this model)



Ink channel sequence setting

According to the actual ink channel sequence, such as: YKWWMC

Save

Ok

Set the ink output of color ink and white ink as required
Usually color ink is 40%, white ink is 100%

Set curve

Click on the curve, left click to add a control point, right click to delete a control point
Drag the control points to adjust the color.



ICC switch

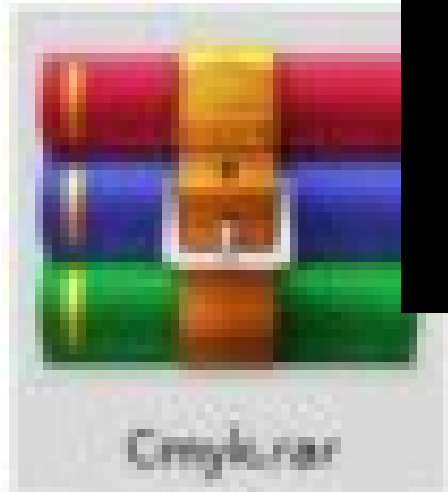
1. Use tick

2. Select curve by model (you can also import it yourself, see next page)

3. OK

If the printing color deviation is large, you can import the ICC curve by yourself

Find the DTG RIP icon on the desktop of the computer and right-click/Open File Location/Profile/CMYK
(The full path is X:/DTGRIP/Profile/CMYK)

[illegible]

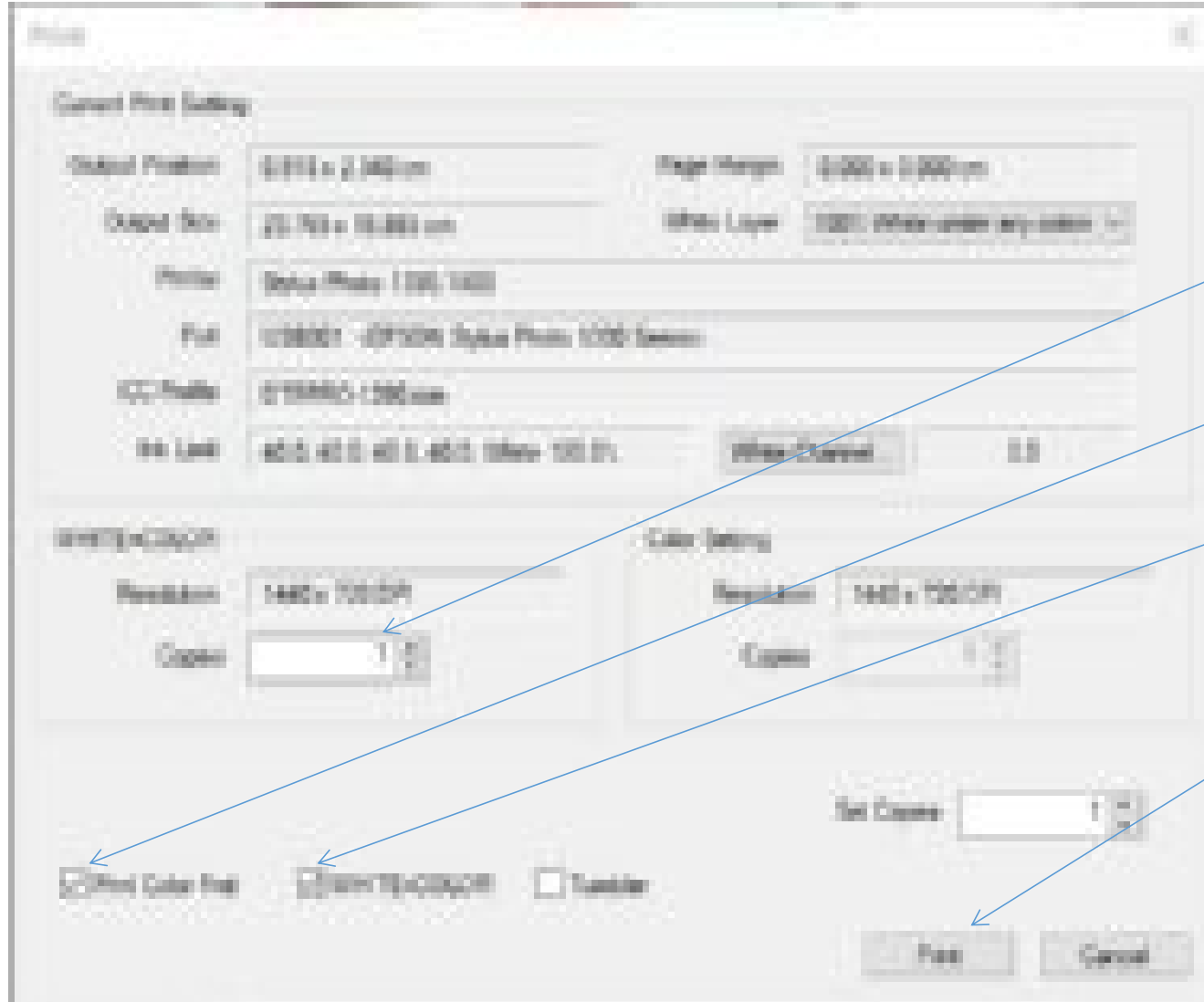


Select the white ink overlay mode !

Print preview.

White ink printing indentation setting
Usually the four sides are set to 1 ~ 2 pixel.

Parameter Settings complete
menu bar File→Print (shortcuts F10)
start printing



Number of prints, set to 1

Click Color First

Click White+color

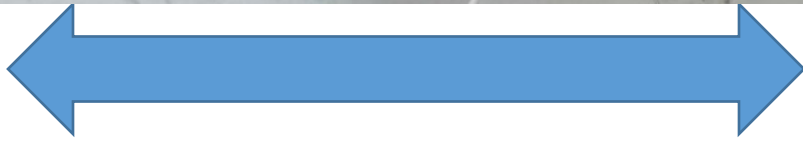
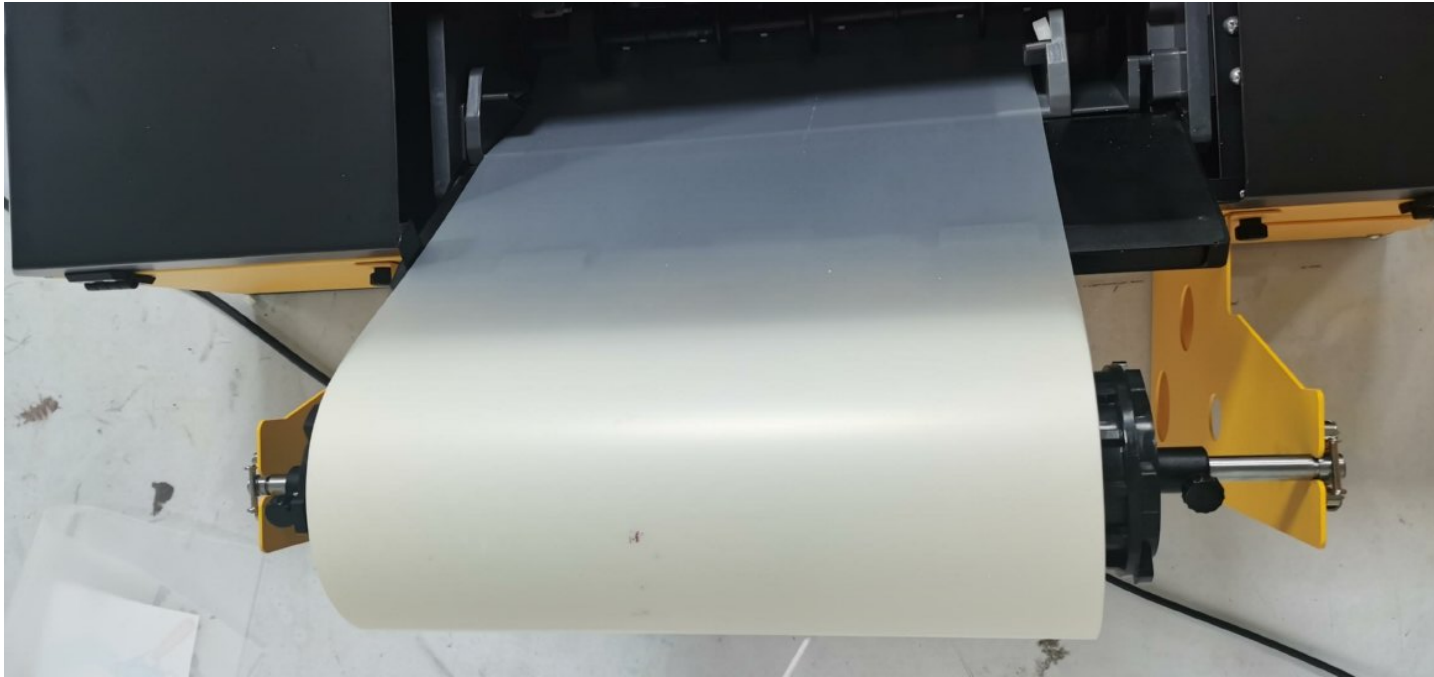
Finally, click Print to start printing!

11. Install roll-stand
11.1 Fix side plate



11.2 Installation of roll shaft and printing film

The hinge is threaded into the fixed sleeve, paper tube core, roll film, paper tube core, fixed sleeve in turn, and put into the U port of the plate on both sides, and buckle the spring buckles on both sides. Move the roll to align with the paper inlet and hand screw the sleeves on both sides



13Printer maintenance

Due to the characteristics of DTF ink, the printer should not be deactivate for a long time, otherwise the ink tube, ink capsule, and printhead are prone to precipitation and blockage.

**Therefore, the printer operates the cleaning nozzle and print nozzle inspection at least once a day.
Prevent printhead blocking.**

If there is no printing task for a long time, it is also necessary to start printing once every 3~4 days, and drip moisturizing liquid on the ink absorbing pad of the cleaning unit before turn-off printer

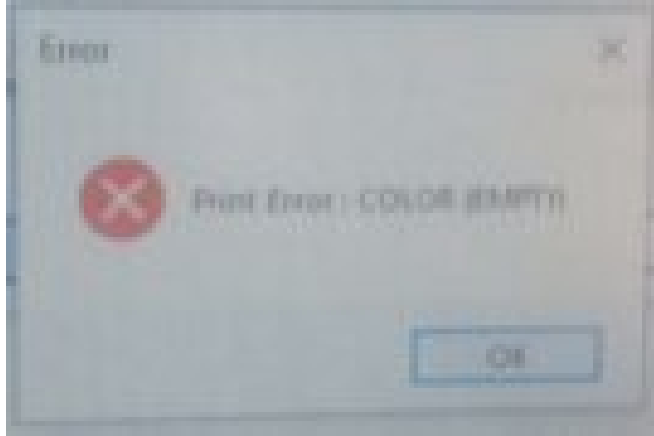
procedure: turn on printer, after the printhead moves about 10CM to the left, cut off the power directly, and drip about 2ML of moisturizing liquid into the ink absorbing pad of the cleaning unit (note: moisturizing should not overflow outside the ink pad!).), and then power on the printer, normal shutdown is ok, ensure that the printhead back to the rightmost cleaning unit position, the ink absorbing pad and the printhead fit, so that could protect the printhead.

After each shutdown, you need to check whether the printhead back to the rightmost origin position, do not let the printhead stay in other positions, otherwise the printhead will be directly exposed to the air, which will cause the printhead to dry out and blocking.

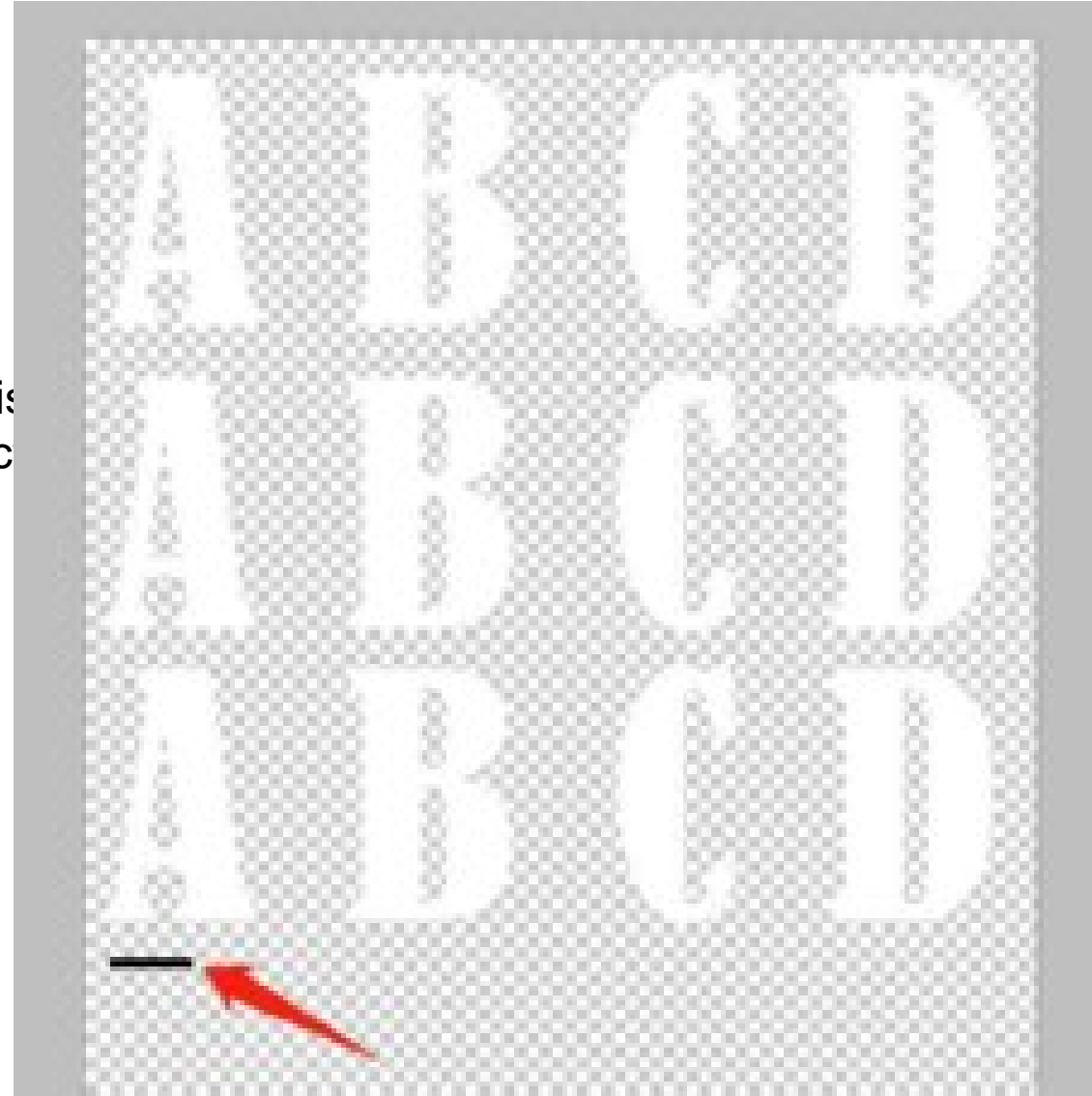
(If the printer reports an error printhead does not back to the origin, you can manually push the printhead to the origin position)

13FAQ

13.1print pure white picture will report error

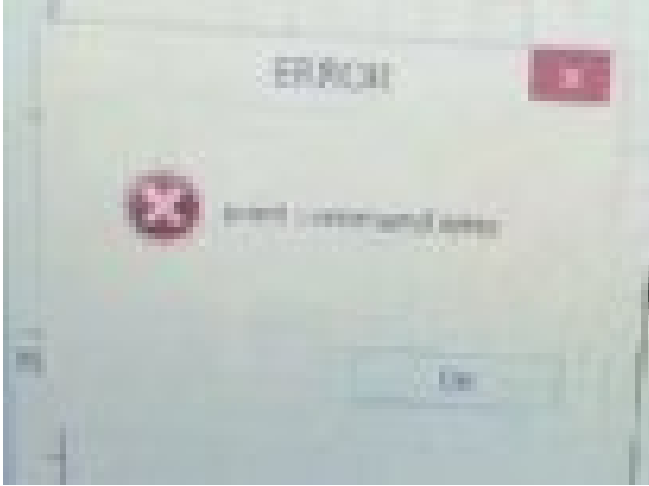


Because the imported image is only pure white, the error color is
Solution: draw a small colored line segment anywhere in the pic
Then import and print .



13FAQ

13.2The print command report an error



The file name of the imported image has special characters, or the file name is too long;

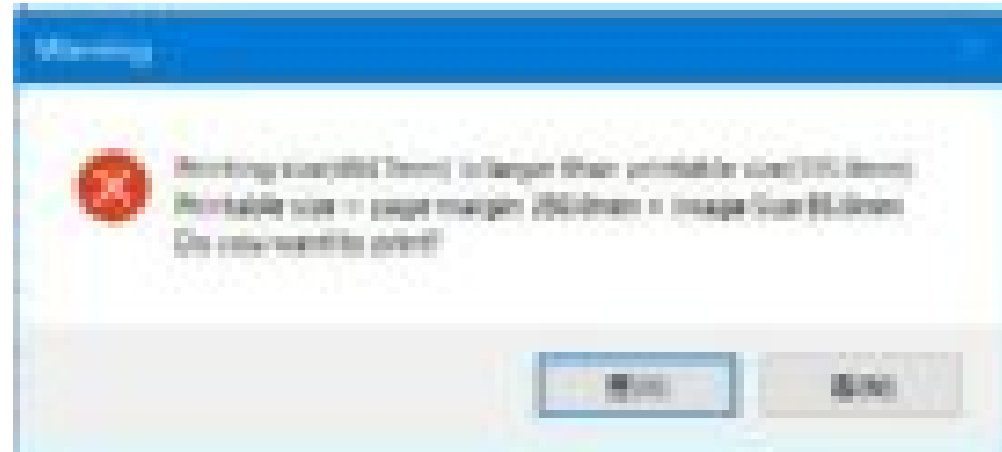
The file is stored too deeply.

Solution: Change the file name to no more than 10 characters;

Transfer where the file is stored.

13FAQ

13.3 Printing report ultra-wide errors :



solution: Set the page margins to 0, 0.

